



Chroma

A plug-in for Brainstorm's eStudio

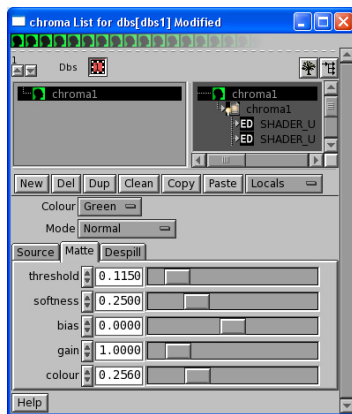


The Chroma plug-in is a high performance chromakey for Brainstorm's eStudio. It uses OpenGL shaders to produce broadcast quality colour keying in real-time without expensive hardware.

Simply choose a incoming video surface with a blue or green screen background and the plug-in will add an alpha channel making the background transparent. Chroma can be used with Brainstorm's virtual sets to cleanly place presenters within the 3D studio environment.

Controls for threshold, softness, bias, gain and colour provide fine control of the matte edges and the diagnostic display modes allow you to inspect and adjust the key with great accuracy. Spill suppression helps to remove unwanted colour spill from the background onto the foreground subjects.

The current version is win32 only; Mac and Linux versions will be available soon.



- **Adds alpha channel to a video texture**
- **Advanced shader based colour keying**
- **Blue or green screen**
- **Fine control of soft edged mattes**
- **Diagnostic display modes to aid key adjustment**
- **Spill suppression**

You can read on-line documentation and download a trial version at www.cleverplugs.com/chroma

